



® Automobili Lamborghini S.p.A.

The information and procedures published below are strictly confidential and exclusively for the Lamborghini Dealer Network and Authorized Service Points. All copyrights are property of Automobili Lamborghini S.p.A based on copyright law. All of the PDF chapters in the WEB workshop manuals described below are based on information available at the time of publication. The company reserves the right to make updates and modifications. The following are prohibited: reprinting, reproduction, forwarding to unauthorized people and/or third parties, and translation, including partial, without written authorization from Automobili Lamborghini S.p.A.

| | | |
|--|---------------------|-------------------|
| Main and connecting rod journals surface hardness | | HVI630 |
| Main and connecting rod journals surface finish | | 0.2 micron |
| Main journals | Rated diameter D | 62.966 ÷ 62.979 |
| Shoulders | Rated width | 40.070 ÷ 40.100 |
| | Oversized thickness | 40.578 ÷ 40.608 |
| Bushing/shaft clearance | | 0.010 ÷ 0.050 |
| Crankshaft axial clearance | | 0.155 ÷ 0.315 |
| Piston pin seat diameter | d | 20.020 ÷ 20.030 |
| Connecting rod small end bushing seat diameter | D | 48.626 ÷ 48.642 |
| Connecting rod big end width | | 19.000 ÷ 19.050 |
| Connecting rod small end width | | 19.900 ÷ 19.950 |
| Distance between centers | i | 134.270 ÷ 134.330 |
| Piston pin assembly clearance | | 0.020 ÷ 0.080 |
| Connecting rod small end bushing assembly clearance | | 0.020 ÷ 0.080 |
| Connecting rod journal bearings assembly clearance on crankshaft | | 0.024 ÷ 0.067 |

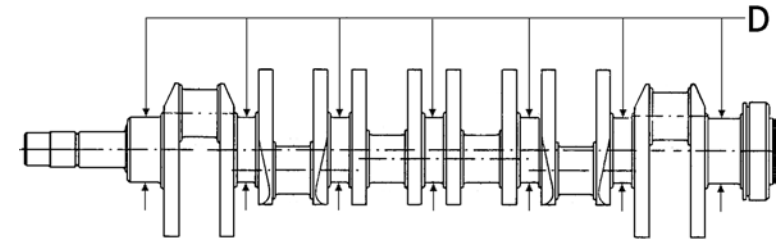


Fig.1

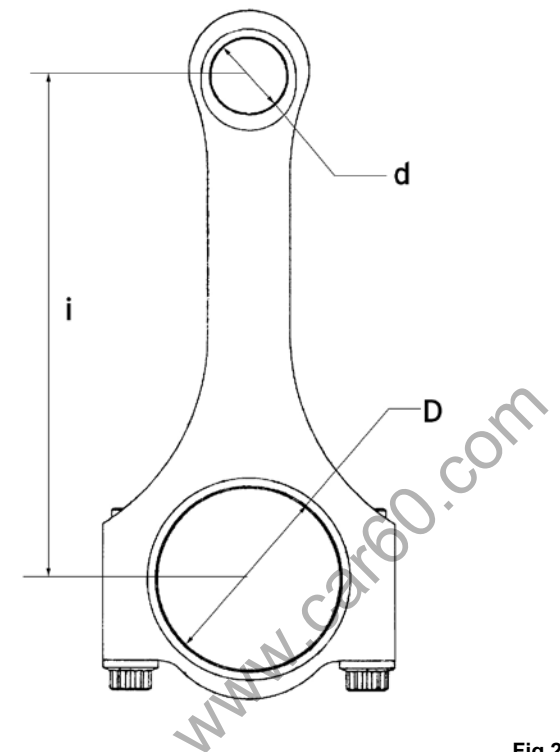


Fig.2